



Intake Temperatures with DSE Heat Shield and Stock.
Static Heat Soak w/ closed hood. Ambient ~-5 deg. C.
Intake Air Temp. ~12 deg. C (Shield); ~30 deg C (Stock).
Thermal images taken immediately after opening hood.

Measurements

°C

2/25/2001 9:56:25 AM

Sp1	33.1
Sp2	9.9
Sp3	13.7
Sp4	7.3
Sp5	22.6
Sp6	11.6
Sp7	70.0

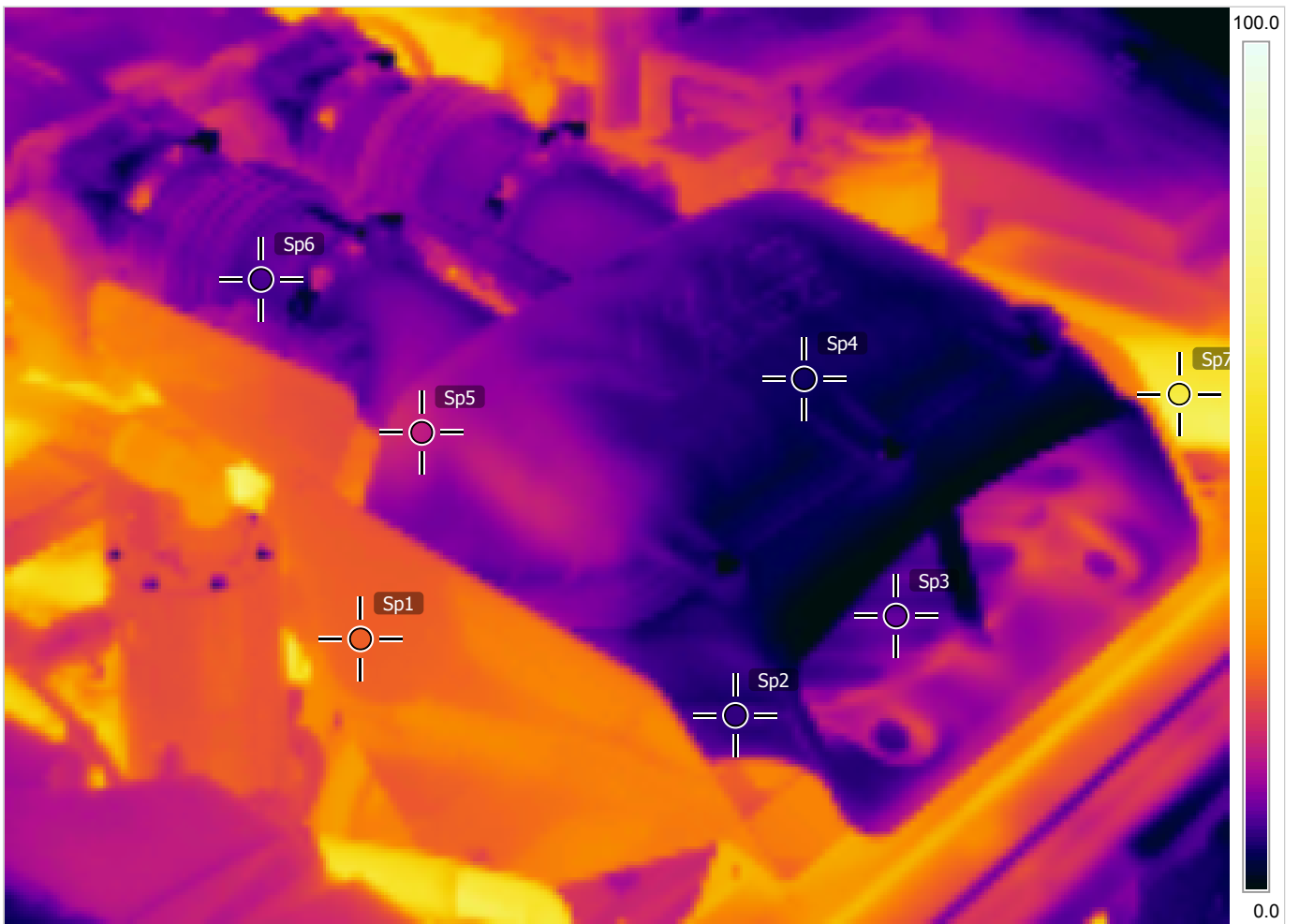
Parameters

Emissivity	0.95
Refl. temp.	20 °C



DC_0106.jpg

2/25/2001 9:56:25 AM



IR_0105.jpg

FLIR E40

49034129



Intake Temperatures with DSE Heat Shield and Stock.
Static Heat Soak w/ closed hood. Ambient ~-5 deg. C.
Intake Air Temp. ~12 deg. C (Shield); ~30 deg C (Stock).
Thermal images taken immediately after opening hood.

Measurements °C

Sp1	46.9
Sp2	43.4
Sp3	33.2
Sp4	24.5
Sp5	42.9
Sp6	38.9
Sp7	70.0

Parameters

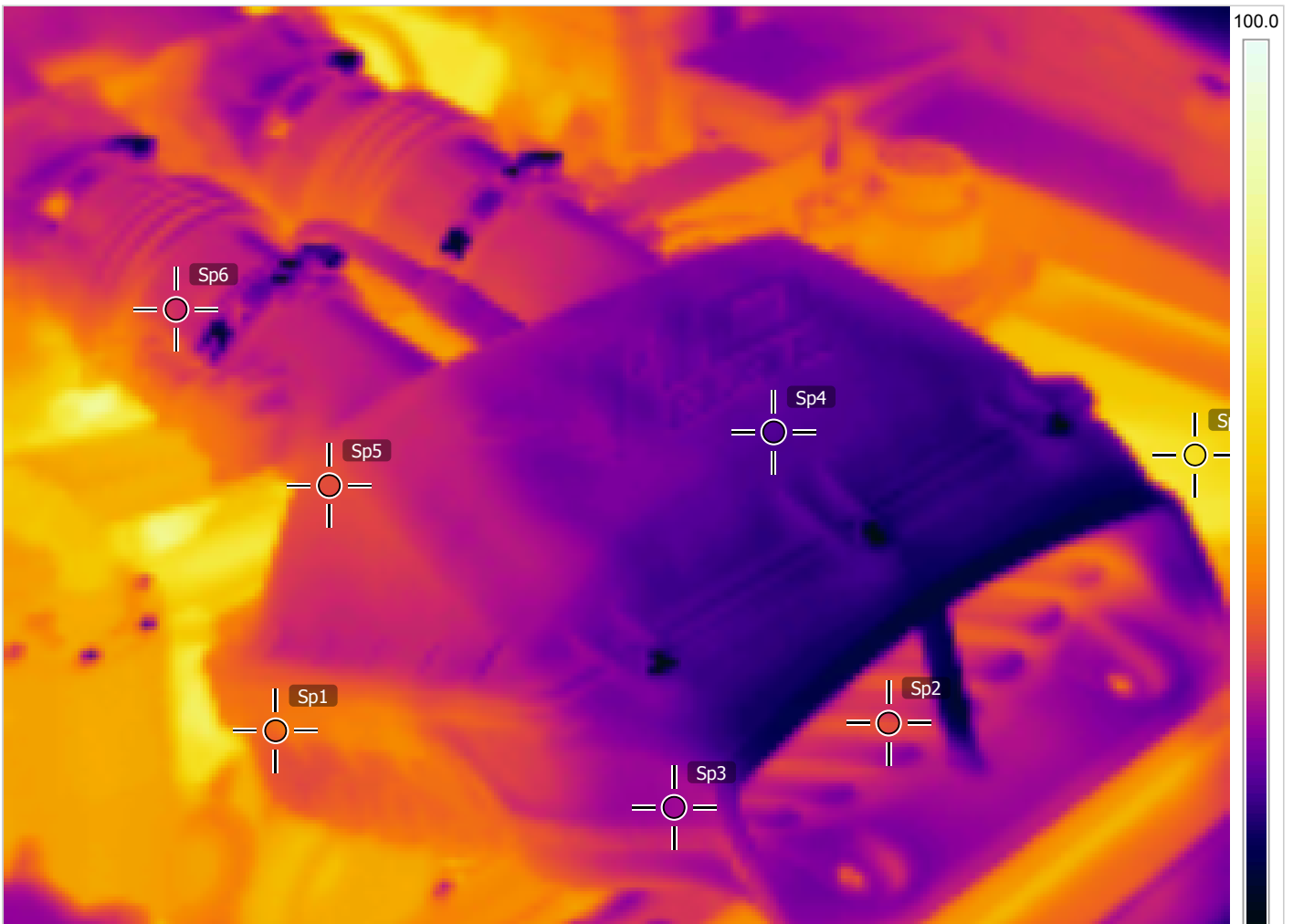
Emissivity	0.95
Refl. temp.	20 °C

2/25/2001 10:18:35 AM



DC_0122.jpg

2/25/2001 10:18:35 AM



IR_0121.jpg

FLIR E40

0.0
49034129